

Custom Gravity Coil

LRC's Gravity Coils (GC) are energy saving, low noise units designed to provide low velocity convective cooling to medium and high temperature spaces. GC units can be custom built for almost any small room, controlled humidity application.

GC units are available in capacities to fit most any application and can be used with R-22, R134a, R404a, or R410a refrigerants.

Chilled water models are available by special order.

Contact LRC's Application Engineers for more information.

- Low noise for sensitive areas - no fan noise
- Energy saving design uses natural air currents - warm air rises and cold air sinks - to reduce energy consumption
- Custom manufactured to your specific requirements
- Insulated rust-proof aluminum housing
- Available up to 144" finned length
- Adjustable hangers to provide the required slope for drainage
- 1/2" MPT drain connection same end as coil connections
- High performance staggered coils with copper tubing mechanically expanded into aluminum fins
- Each unit pressure tested to eliminate leaks.
- Factory wired for easy field installation
- UL Recognized



Options Available— Call for details

- Copper or coated coils for coastal/special applications
- Secondary drain pan for elevated/sensitive installations
- Stainless steel or painted cabinets available for corrosive environments
- Pre-charged, custom or OEM units can be made to your order

Our Application Engineers can help you design the system you need. Call us today, 562-944-1969, and we'll help you get the right LRC product for your project.

OUR UNCONDITIONAL GUARANTEE

We're proud of the workmanship that goes into every LRC product. Because of our exacting design and manufacturing standards, and our thorough testing prior to shipping, we unconditionally guarantee our products to be free from manufacturing defects for one year. You can count on LRC Coil for quality heat transfer products.

Visit www.lrccoil.com for installation and maintenance data, and wiring diagrams.

At LRC, we are continuously working to improve our products, therefore, we reserve the right to make changes without notice.

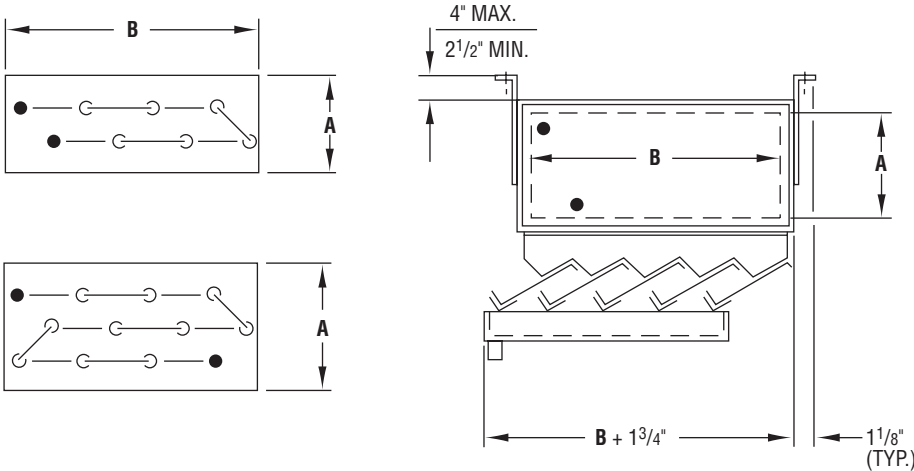
© LRC Coil Company 2007

LRC Low Noise, Energy Saving Gravity Coils

COIL COMPANY

TECHNICAL BULLETIN GCRC 092007 C

PAGE 2



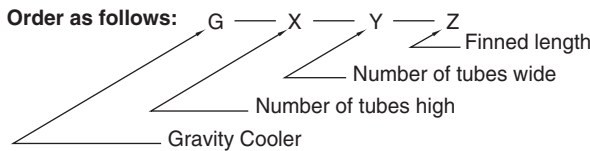
Our Application Engineers can help you design the system you need. Call today, 562-944-1969, and we'll help you get the right LRC product for your project.

Please note:

LRC cooling units are designed to minimize noise and vibration. To reduce/eliminate amplification of existing noise or vibration, extreme care must be taken during installation. Please refer to supplied installation instructions and use proper installation materials to minimize acoustic impact.

Rows	A
4	6"
3	4 1/2"
2	3"

Tubes High	B
16	28"
14	24 1/2"
12	21"
10	17 1/2"
8	14"
6	10 1/2"
4	7"



All models available up to 144" finned length.

- Overall length=finned length + 6"
- Overall width=Dimension B + 3"
- Overall height=Dimension A + 9 3/4" to 11 3/4"

Mounting holes – 5/8" diameter

All coils are 4 fins per inch

Selection Example

The job requires 6,000 BTUH @ 15°F TD and the space allowed is 22 inches x 96 inches.

From our table take a G-2-10-90 @ 15°F TD, it will provide 48.0 BTUH per inch of coil.

48.0 BTUH per inch x 90 inches = 4320 BTUH

More capacity is needed, so we try a G-3-10-90 @ 15°F TD which gives us 72 BTUH per inch.

72.0 BTUH per inch x 90 inches = 6480 BTUH

This is more than we need: shorten the coil to the exact need as follows: 6480 – 6000 = 480 excess BTUH with a G-3-10-90. 480 divided by 72 BTUH per inch = 6.66 extra inches. Reduce the coil by 6".

Order a G-3-10-84. (Check 72 x 84 = 6048 BTUH)

Solution

1. The overall width of the coil is dimension "B" + 3", therefore, take the 22" maximum width and subtract 3" and divide the result by 1.75.

22" – 3" = 19"

19" divided by 1.75 = 10.85

Use 10 tube wide. (Always use an even number smaller than the answer).

2. The overall length of the coil is 6" larger than the finned length, therefore, subtract 6" from the maximum space allowed.

96" – 6" = 90"

3. Same trial and error is now necessary: We know the limit of the coil is to be 10 tubes wide and 90" long.

Custom Gravity Cooler Capacities

Model No.	Capacity in BTUH Per Inch or Finned Length		
	1°F TD	10°F TD	15°F TD
G-2-4-Z	1.28	12.8	19.2
G-2-6-Z	1.92	19.2	28.8
G-2-8-Z	2.56	25.6	38.4
G-2-10-Z	3.20	32.0	48.0
G-2-12-Z	3.84	38.4	57.6
G-2-14-Z	4.48	44.8	67.2
G-2-16-Z	5.12	51.2	76.8
G-3-4-Z	1.92	19.2	28.8
G-3-6-Z	2.88	28.8	43.2
G-3-8-Z	3.84	38.4	57.6
G-3-10-Z	4.80	48.0	72.0
G-3-12-Z	5.76	57.6	86.4
G-3-14-Z	6.72	67.2	100.8
G-3-16-Z	7.68	76.8	115.2
G-4-4-Z	2.56	25.6	38.4
G-4-6-Z	3.84	38.4	57.6
G-4-8-Z	5.12	51.2	76.8
G-4-10-Z	6.40	64.0	96.0
G-4-12-Z	7.68	76.8	115.2
G-4-14-Z	8.96	89.6	134.4
G-4-16-Z	10.24	102.4	153.6

Z = Finned length

Additional dimensions and capacities are available.

Contact factory for details.